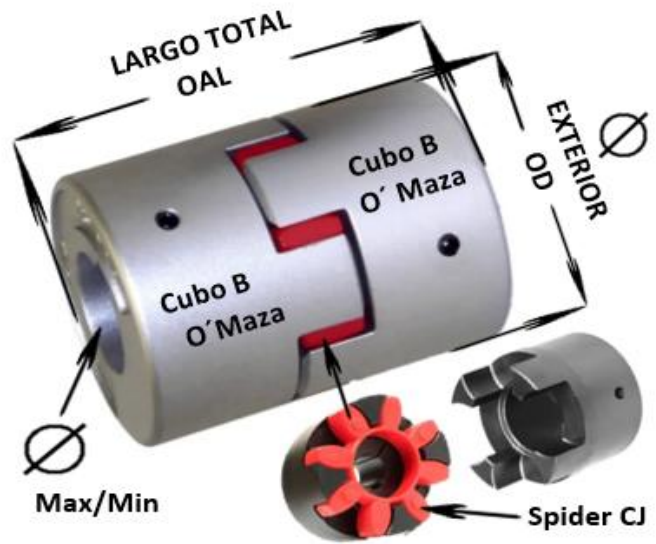
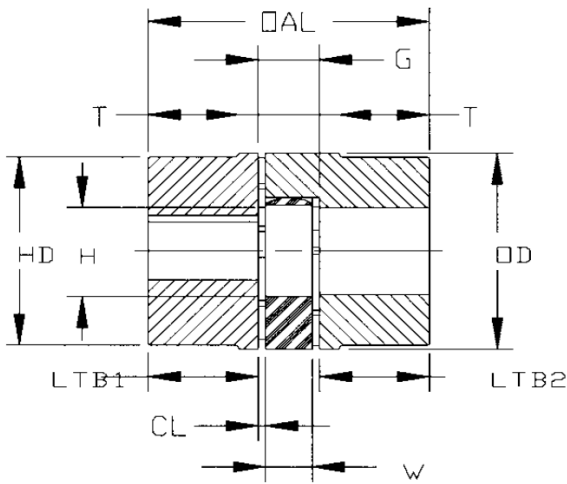


COPLE LOVEJOY **CJ** ACERO FUNDICION MAZAS RECTAS



Configuración "BB"

Tipo	Cubo	Fundición		LTB1 Y LTB2	G	CL	W	OAL	T;U	OD	H	Par Nominal (Nm)	
		Ø Min/Max	HD									92 Sh	98 Sh
14 *	B	S-16	-	11	13	1,5	10	35		30	10	7,5	12,5
	BX	S-16	-	18,5	13	1,5	10	50		30	10		
19/24	A	S-19	32	25	16	2	16	66	20	40	18	10	17
	B	S-24	-	25	16	2	16	66		40	18		
	BX	S-24	-	37	16	2	16	90		40	18		
24/32	A	S-24	40	30	18	2	18	78	24	56	27	35	60
	B	S-32	-	30	18	2	18	78		56	27		
	BX	S-32	-	50	18	2	18	118		56	27		
28/38	A	S-28	48	35	20	2,5	20	90	28	65	30	95	160
	B	11-38	-	35	20	2,5	20	90		65	30		
	BX	S-38	-	60	20	2,5	20	140		65	30		
38/45	A	S-38	66	45	24	3	24	114	37	80	38	190	325
	B	12-45	-	45	24	3	24	114		80	38		
	BX	S-45	-	70	24	3	24	164		80	38		
42/55	A	S-42	75	50	26	3	26	126	40	95	46	265	450
	B	36-55	-	50	26	3	26	126		95	46		
	BX		-	75	26	3	26	176		95	46		
48/60	A	S-48	85	56	28	3,5	28	140	45	105	51	310	525
	B	42-60	-	56	28	3,5	28	140		105	51		
	BX		-	80	28	3,5	28	188		105	51		
55/70	A	S-55	98	65	30	4	30	160	52	120	60	410	685
	B	49-70	-	65	30	4	30	160		120	60		
	BX		-	90	30	4	30	210		120	60		
65/75	A	S-65	115	75	35	4,5	35	185	47	135	68	625	940
	B	59-75	-	75	35	4,5	35	185		135	68		
	BX		-	100	35	4,5	35	235		135	68		
75/90	A	S-75	135	85	40	5	40	210	53	160	80	1280	1920
	B	52-90	-	85	40	5	40	210		160	80		
	BX		-	110	40	5	40	260		160	80		
90/100	A	S-90	160	100	45	5,5	45	245	62	200	100	2400	3600
	B	81-100	-	100	45	5,5	45	245		200	100		
	BX		-	125	45	5,5	45	295		200	100		
100 **	B	42-100	200	110	50	6	50	270		225	113	3300	4950
110 **	B	62-125	230	120	55	6,5	55	295		255	127	4800	7200
125 **	B	12-145	265	140	60	7	60	340		290	147	6650	10000

SELECCIÓN DE SPIDER LOVEJOY CJ

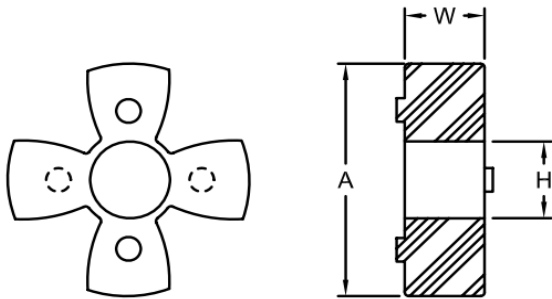
DUREZA DEL SPIDER

AMARILLO 92 Sh

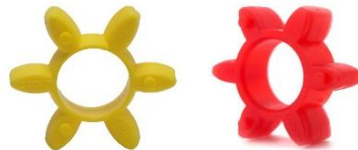
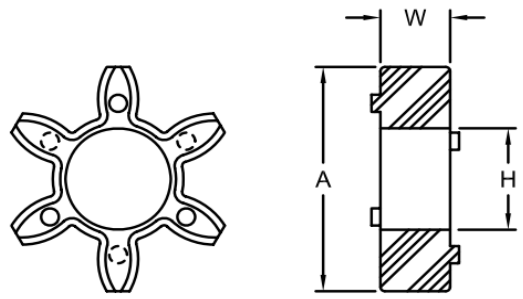
ROJO 98 sh



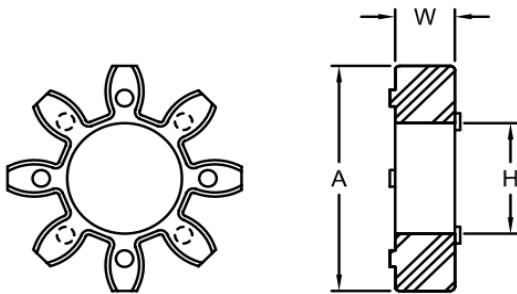
Size	A		H		W	
	in	mm	in	mm	in	mm
14	1.18	30	0.39	10	0.39	10
19/24	1.57	40	0.71	18	0.47	12
24/32	2.16	55	1.06	27	0.55	14
28/38	2.56	65	1.15	29	0.59	15
38/45	3.15	80	1.50	38	0.71	18
42/55	3.74	95	1.81	46	0.79	20
48/60	4.13	105	2.01	51	0.83	21
55/70	4.72	120	2.36	60	0.87	22
65/75	5.31	135	2.68	68	1.02	26
75/90	6.30	160	3.15	80	1.18	30
90/100	7.87	200	3.94	100	1.34	34
100/110	8.86	225	4.45	113	1.50	38
110/125	10.04	255	5.00	127	1.65	42
125/145	11.42	290	5.79	147	1.81	46
140	12.60	320	6.50	165	1.97	50
160	14.57	370	7.48	190	2.24	57
180	16.54	420	8.66	220	2.52	64



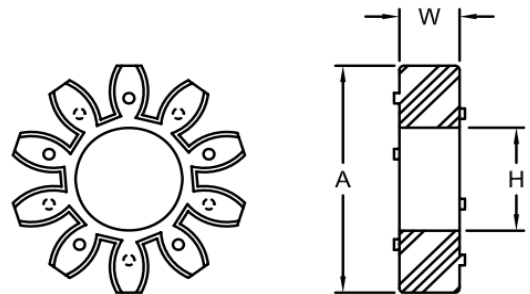
CJ 14



CJ 19/24



CJ 24/32 - 65/75



CJ 75/90 - 125/145

