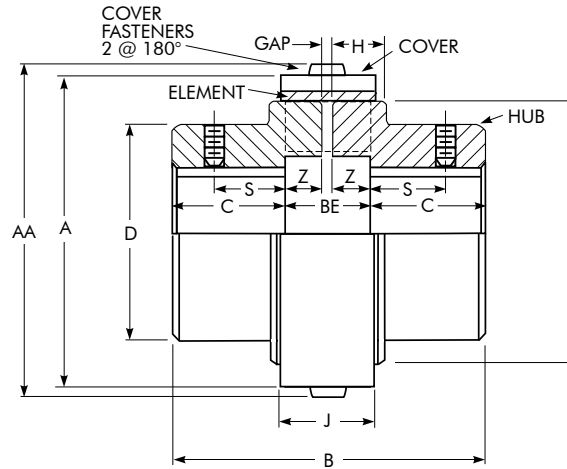




Falk Wrapflex Elastomeric Couplings (Inch)



Close-Coupled Type R10



Dimensions (in)

| Cplg Size ① | Torque Rating (lb-in) | Allow Speed RPM | Min Bore | Max Bore ② | Cplg Wt (lb) ③ | | A | | AA | | B | BE ⑤ | C | D | F | H | J | S | Z | GAP ⑤ | Cover Fasteners ⑥ | |
|----------------|--------------------------|--------------------|----------|------------|----------------|---------------|-------------|---------------|-------------|---------------|-------|------|------|-------|-------|------|------|------|------|-------|----------------------|--------------|
| | | | | | Nylon Cover | Steel Cover ④ | Nylon Cover | Steel Cover ④ | Nylon Cover | Steel Cover ④ | | | | | | | | | | | Size | Allen Wrench |
| 5R | 550 | 4500 | 0.500 | 1.625 | 2.96 | 3.27 | 3.01 | 3.01 | 3.17 | 3.17 | 2.83 | 0.78 | 1.02 | 2.36 | 2.52 | 0.59 | 0.91 | 0.63 | 0.35 | 0.078 | M4 | M2.5 |
| 10R | 1,150 | 4500 | 0.625 | 1.875 | 5.48 | 5.98 | 3.56 | 3.56 | 3.72 | 3.72 | 3.62 | 0.94 | 1.34 | 2.84 | 2.99 | 0.75 | 1.10 | 0.88 | 0.43 | 0.078 | M4 | M2.5 |
| 20R | 2,800 | 4500 | 0.750 | 2.375 | 12.4 | 13.4 | 4.96 | 4.88 | 5.20 | 5.12 | 4.80 | 1.26 | 1.77 | 3.62 | 4.02 | 0.98 | 1.46 | 1.00 | 0.59 | 0.078 | M6 | M4 |
| 30R | 4,600 | 4500 | 1.000 | 2.875 | 20.7 | 22.1 | 5.77 | 5.63 | 6.01 | 5.87 | 5.98 | 1.42 | 2.28 | 4.13 | 4.65 | 1.14 | 1.65 | 1.25 | 0.67 | 0.078 | M6 | M4 |
| 40R | 9,100 | 3600 | 1.125 | 3.375 | 37.6 | 39.8 | 7.17 | 6.97 | 7.48 | 7.28 | 7.13 | 1.85 | 2.64 | 5.12 | 5.91 | 1.34 | 2.15 | 1.63 | 0.83 | 0.197 | M8 | M5 |
| 50R | 22,200 | 3000 | 1.250 | 4.125 | 78.8 | 82.9 | 9.09 | 8.82 | 9.41 | 9.13 | 8.46 | 2.39 | 3.03 | 7.01 | 7.48 | 1.81 | 2.74 | 1.75 | 1.10 | 0.197 | M8 | M5 |
| 60R | 35,500 | 2500 | 2.000 | 5.250 | — | 146 | — | 10.51 | — | 10.94 | 10.84 | 2.97 | 3.94 | 8.25 | 8.98 | 2.37 | 2.64 | — | 1.39 | 0.197 | M10 | M6 |
| 70R | 70,900 | 2100 | 2.750 | 6.125 | — | 244 | — | 12.20 | — | 12.64 | 12.76 | 3.31 | 4.72 | 9.88 | 10.63 | 2.74 | 2.95 | — | 1.56 | 0.197 | M10 | M6 |
| 80R | 133,000 | 1800 | 3.375 | 7.250 | — | 365 | — | 14.57 | — | 15.00 | 14.84 | 3.82 | 5.51 | 10.63 | 12.91 | 3.28 | 3.35 | — | 1.79 | 0.236 | M10 | M6 |

- ① Wrapflex is a metric product. Metric to inch conversions may not be direct. Dimensions are for reference only and are subject to change without notice unless certified.
- ② AGMA Class 1 clearance fit bores are standard for Sizes 5R thru 50R, with two setscrews (one over keyway and one at 90°). Interference fit bores and no setscrews are standard for Sizes 60R thru 80R. Long hubs and interference fits are available and recommended when at or near maximum bore and: a) Number of start/stop cycles exceeds 10 per hour; or b) Application service factor = 2.0 or higher.
- ③ Coupling assembly weight is based on “no bore” hubs. For coupling assembly weight and bored hubs, subtract the following value for each hub: $(0.20)(\text{Bore})^2(C)$ lb. Bore in “inches”.
- ④ Nylon cover is standard on Sizes 5R thru 50R, with an epoxy-coated steel cover as an option. Epoxy-coated steel cover is standard on Sizes 60R thru 80R, with no option for nylon cover.
- ⑤ “BE” = Standard “Distance Between Shaft Ends” with hubs mounted flush to the shaft ends. “GAP” = Minimum allowable “Distance Between Shaft Ends”. Any shaft end spacing between the “GAP” and “BE” dimensions is acceptable. However, if utilizing a shaft end spacing less than the “BE” dimension, the key should not extend beyond the hub face in order to prevent potential interference with the flex element.
- ⑥ Cover fasteners are stainless steel, socket button head cap screws, per ISO 7380-A2. Two cap screws per coupling assembly.